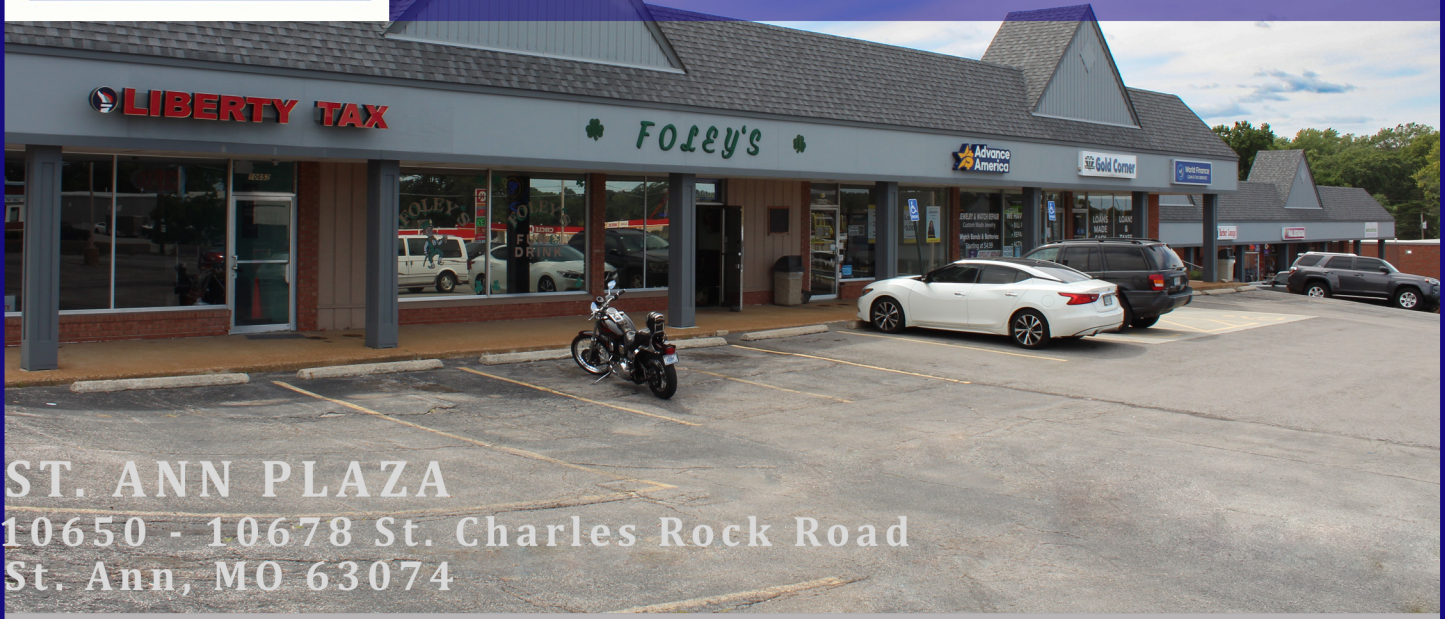




FOR LEASE

1,100 - up to 4,400 sq. ft.



ST. ANN PLAZA
 10650 - 10678 St. Charles Rock Road
 St. Ann, MO 63074

41,500 sq. ft. center in stable market with good demographics

Pylon signage available

Anchored by Aldi at signalized intersection of Cypress Road

Good visibility and easy access



PETER BEARMAN
pbearman@nremgmt.com
 (314) 878-5545
www.nremgmt.com

DEMOGRAPHICS

	<u>1 Mile</u>	<u>3 Miles</u>	<u>5 Miles</u>
Population	10,627	72,193	186,122
Median HH Income	\$49,121	\$51,290	\$54,217
Average Traffic Count	> 20,000 vehicle per day		



**AVAILABLE
1,200 SQ. FT.**

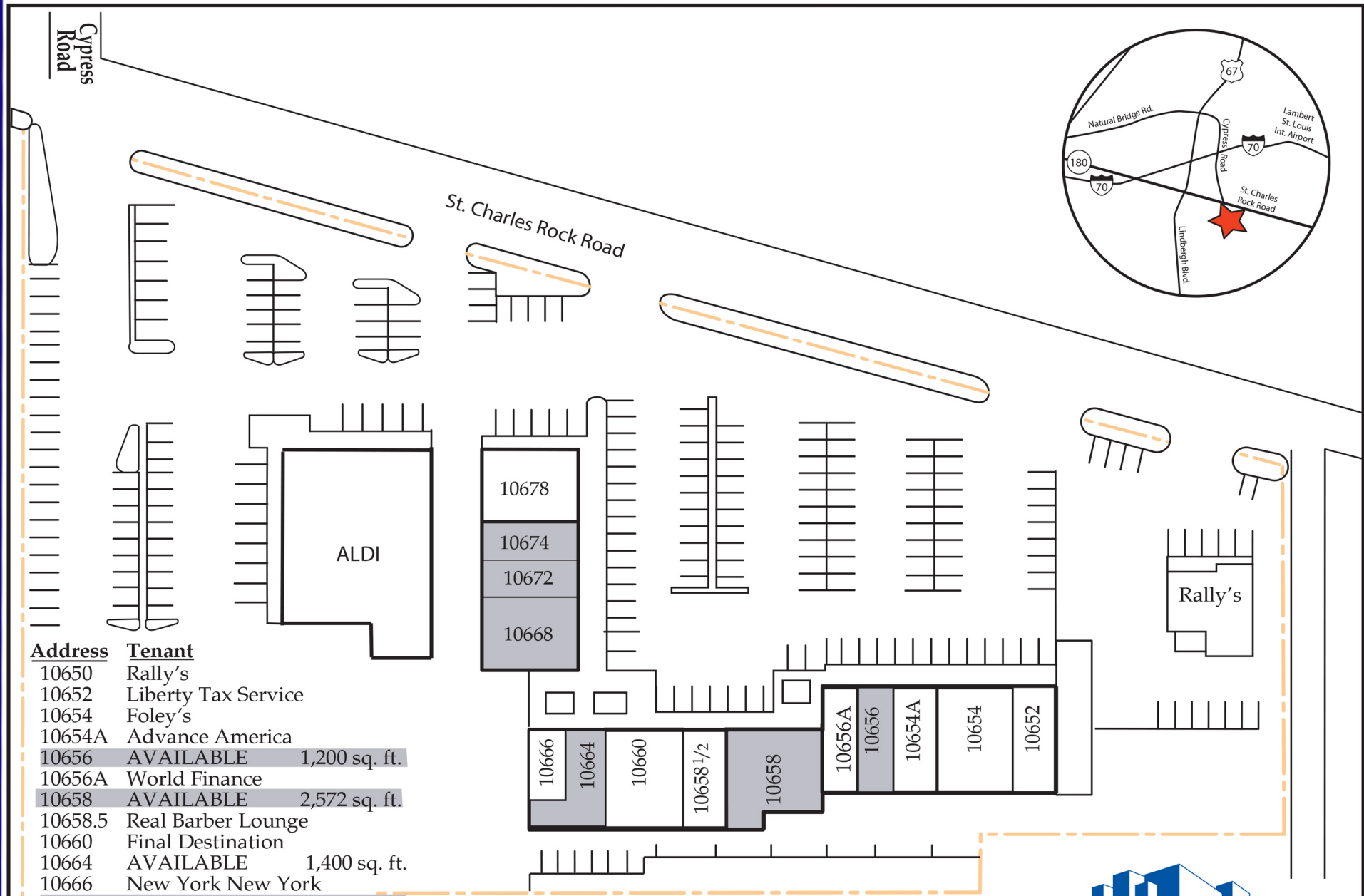
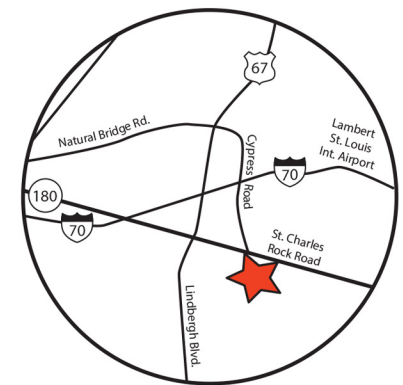


**AVAILABLE
2,456 SQ. FT.**



**AVAILABLE
1,100 - 4,400 SQ. FT.**





Address	Tenant	
10650	Rally's	
10652	Liberty Tax Service	
10654	Foley's	
10654A	Advance America	
10656	AVAILABLE	1,200 sq. ft.
10656A	World Finance	
10658	AVAILABLE	2,572 sq. ft.
10658.5	Real Barber Lounge	
10660	Final Destination	
10664	AVAILABLE	1,400 sq. ft.
10666	New York New York	
10668-70	AVAILABLE	2,200 sq. ft.
10672	AVAILABLE	1,100 sq. ft.
10674	AVAILABLE	1,100 sq. ft.
10678	POP'S KITCHEN	

ST. ANN PLAZA

10650-10680 St Charles Rock Road - St. Ann, MO 63074



The information contained herein has been given to us by sources believed reliable. We have no reason to doubt its accuracy, but we do not guarantee it.